

I D R

Immediate Dentoalveolar Restoration Immersion Course

Immediate-loaded implants in compromised alveolar sockets

THE TECHNIQUE

The Immediate Dentoalveolar Restoration (IDR) is a technique established to broaden indications for immediate loading on individual teeth. In this way, tissue losses with varied extensions are reconstructed in the same surgical session of implant placement and provisional crown installation, reducing the number of interventions and keeping predictability on esthetic aspects.

The IDR protocol was developed six years ago from the need to minimize the treatment time and morbidity of reconstructive procedures used in these cases. It was also the theme of the book of the same name launched in 2010, by Santos Publishing – São Paulo – Brazil.

THE BOOK

The book discuss themes related to the technique, such as the immediate loading, the maxillary tuberosity as a graft donor area, and the correct anatomy of the provisional crown as an essential factor to the emergence profile maintenance. The IDR protocol is presented as a viable and reproducible possibility. It advocates minimally invasive procedures, without flap raising. The first book edition, with 1.500 issues, was sold out in three mounths after its launching. The second edition was launched in 2011. The Spanish version was launched in 2012 and the English version will be launched in 2013.

COURSE

In the course, it will be discussed the scientific basis, the step by step technique and the indications. It will also present several cases, which showed previously one or more compromised alveolar walls of the involved tooth, with or without changes of the gingival margin, some with more than 6 years of clinical, radiographic and CT scan follow-up. In the end, before the alive surgery, the demonstrative case will be discussed and planned with the participants.

LECTURERS

JOSÉ CARLOS MARTINS DA ROSA



- Graduation course in Dentistry, Federal University of Santa Maria – UFSM – Santa Maria / RS – Brazil, 1988.
- Specialization course in Periodontics, São Paulo Association of Dentistry – APCD – Bauru / SP – Brazil, 1991.
- Specialization course and Master of Science in Prosthesis, CPO SLMandic – Center of Dental Research São Leopoldo Mandic – Campinas / SP – Brazil, 2005.
- Doctorate Student in Implantology, CPO SLMandic – Center of Dental Research São Leopoldo Mandic – Campinas / SP – Brazil.
- Private Practice in Caxias do Sul / RS – Brazil.

ARIÁDENE CRISTINA PÉRTILE DE OLIVEIRA ROSA



- Graduation course in Dentistry, Catholic University of Rio Grande do Sul – PUCRS – Porto Alegre / RS – Brazil, 2002.
- Specialization course in Implantology, CPO SLMandic – Center of Dental Research São Leopoldo Mandic, Campinas / SP – Brazil, 2005.
- Specialization course in Acupuncture, Brazilian College of Systemic Studies – CBES – Porto Alegre / RS – Brazil, 2010.
- Master of Science in Implantology, CPO SLMandic – Center of Dental Research São Leopoldo Mandic – Campinas / SP – Brazil, 2012.
- Doctorate Student in Implantology, CPO SLMandic – Campinas / SP – Brazil.
- Private Practice in Caxias do Sul / RS – Brazil.

MARCOS ALEXANDRE FADANELLI



- Graduation course in Dentistry, Catholic University of Rio Grande do Sul – PUCRS – Porto Alegre / RS – Brazil, 1997
- Master of Science in Restorative Dentistry, CPO SLMandic – Center of Dental Research São Leopoldo Mandic, Campinas / SP – Brazil, 2012.
- Professor of Operative Dentistry at the Serra Gaucha School, Caxias do Sul / RS - Brazil
- Coordinator of Esthetic Rehabilitation Course at the Brazilian Dentistry Association, Caxias do Sul / RS – Brazil.
- Private Practice in Caxias do Sul / RS – Brazil.

PROGRAM

Presentation of the Immediate Dentoalveolar Restoration technique

Bone defect region analysis - diagnosis and technique indications

Classification of socket bone defects

Approach in intact sockets

Use of the maxillary tuberosity as a donor area of bone and soft tissue - tissue biology and surgical technique

IDR protocol using cortico-cancellous graft

Fabrication of the ideal provisional restoration

Emergence profile design on implant-supported prostheses

Technical application in:

- upper anterior area
- lower anterior area
- posterior areas
- cases with low initial stability of the implant
- cases with small gingival recession
- cases with proximal bone defects
- patients with periodontal disease

Advantages of applying Platform Switching implants

IDR protocol with triple graft

Complications and how to avoid them

Hands-on exercises

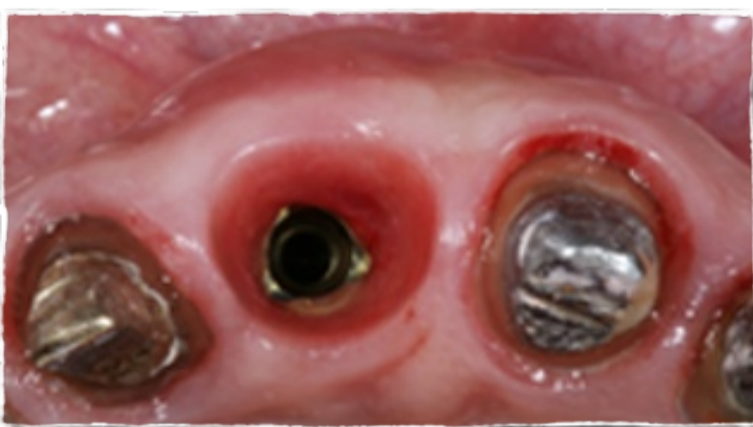
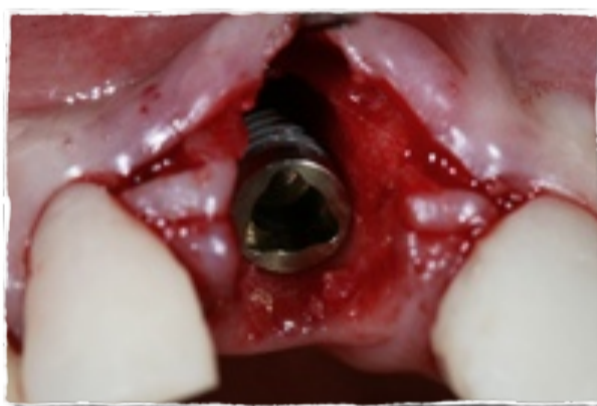
Evaluation, discussion and planning of the demonstrative case

Demonstrative live surgery

Integrated discussion

Final considerations

CLINICAL CASES



Information:

rosa@rosaodontologia.com.br

www.rosaodontologia.com.br